



THE MANZILI COLLECTION

PRIVATE | EXCLUSIVE | LUXURY | AT YOUR OWN PACE



WHERE ARCHITECTURE MEETS INTENTION AND HOME MEETS WILDERNESS. THE MANZILI COLLECTION OFFERS TWO PRIVATE HOMES, EACH AN EXCLUSIVE EXPERIENCE TAILORED TO YOUR PACE, A SPACE TO PAUSE, RECONNECT, AND SHARE MEANINGFUL MOMENTS WITH YOUR LOVED ONES. THE COLLECTION INCLUDES MANZILI HOUSE IN NAIROBI, NESTLED IN THE LEAFY CALM OF KAREN, WHERE SWAHILI-INSPIRED DESIGN MEETS STILLNESS AND ART, AND MANZILI MARA ON THE EDGE OF THE GREAT RIFT, PERCHED HIGH ON THE SIRIA ESCARPMENT, WHERE ENDLESS VIEWS STRETCH ACROSS THE MAASAI MARA. EACH HOME IS CRAFTED WITH CULTURAL INTEGRITY, SHAPED BY THE LAND, AND BUILT BY LOCAL ARTISANS. FOR THOSE WHO TRAVEL TO FEEL, NOT JUST TO SEE.



MANZILI
HOUSE
NAIROBI - KENYA

PRIVATE | EXCLUSIVE | LUXURY | AT YOUR OWN PACE

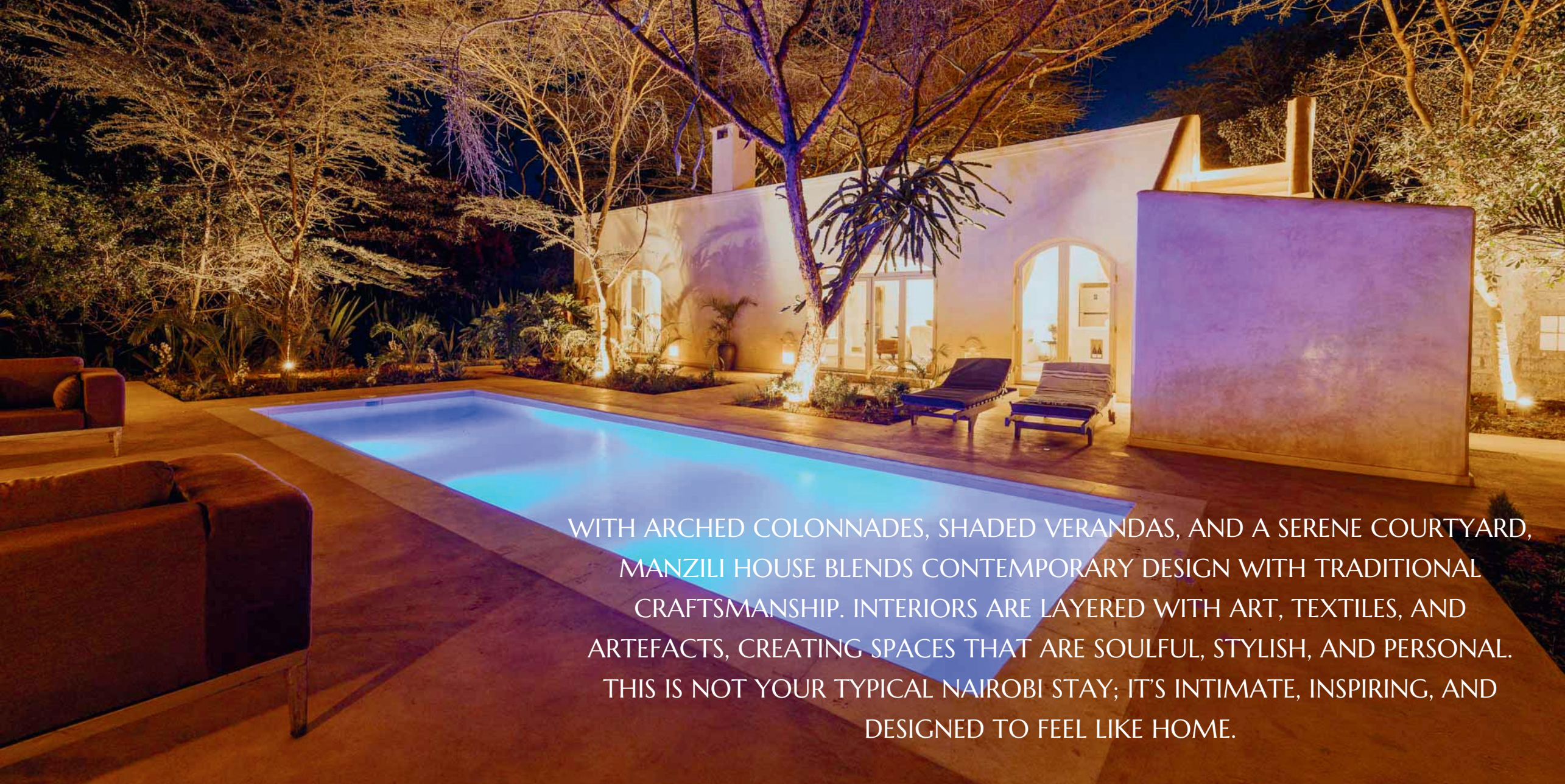
A LUXURY HOME AWAY FROM HOME

TUCKED AWAY IN PEACEFUL LEAFY KAREN



TUCKED AWAY IN NAIROBI'S KAREN SUBURB, MANZILI HOUSE IS A SECLUDED SIX-BEDROOM VILLA THAT FEELS BOTH LIKE A RETREAT AND A HOME. INSPIRED BY SWAHILI AND NORTH AFRICAN ARCHITECTURE, IT REFLECTS THE SAME ARTISANAL SPIRIT AS MANZILI MARA IN THE MAASAI MARA. OFFERED EITHER EXCLUSIVELY OR ON A PER-ROOM BASIS, MANZILI HOUSE PROMISES CALM, PRIVACY, AND THE RARE LUXURY OF TIME—AN ELEGANT BASE IN NAIROBI, JUST MINUTES FROM NAIROBI NATIONAL PARK AND WILSON AIRPORT.

AN OASIS IN THE CITY



WITH ARCHED COLONNADES, SHADED VERANDAS, AND A SERENE COURTYARD, MANZILI HOUSE BLENDS CONTEMPORARY DESIGN WITH TRADITIONAL CRAFTSMANSHIP. INTERIORS ARE LAYERED WITH ART, TEXTILES, AND ARTEFACTS, CREATING SPACES THAT ARE SOULFUL, STYLISH, AND PERSONAL. THIS IS NOT YOUR TYPICAL NAIROBI STAY; IT'S INTIMATE, INSPIRING, AND DESIGNED TO FEEL LIKE HOME.

RELAXATION ON YOUR OWN TERMS

A STAY AT MANZILI IS MORE THAN A RETREAT; IT IS A TAPESTRY OF MOMENTS, INTIMATE, ARTFUL, AND ALIVE. AS DUSK DESCENDS, ROOFTOP SUNDOWNERS INVITE THE GENTLE APPEARANCE OF BUSH BABIES, THEIR QUIET CURIOSITY ADDING WONDER TO THE EVENING AIR, WHILE THE OCCASIONAL CALL OF A TREE HYRAX ECHOES THROUGH THE STILLNESS. DINING AT MANZILI IS BOTH REFINED AND PERSONAL: MEALS ARE THOUGHTFULLY TAILORED TO YOUR PREFERENCES, SERVED WITH WARMTH, CREATIVITY, AND CARE. EACH STAY IS ACCOMPANIED BY DEDICATED BUTLER SERVICE, ENSURING YOUR DAYS UNFOLD WITH EFFORTLESS GRACE. FROM STORIES SHARED OVER GOLDEN-HOUR COCKTAILS TO THE QUIET LUXURY OF SOLITUDE, MANZILI IS, ABOVE ALL, A HOME. AT ITS HEART LIES A DEVOTION TO DETAIL AND INTUITIVE HOSPITALITY, SO THAT EVERY GUEST FEELS NOT ONLY WELCOMED, BUT DEEPLY SEEN AND REMEMBERED.





DINING – A TASTE OF HOME COOKED MEALS WITH SOUL

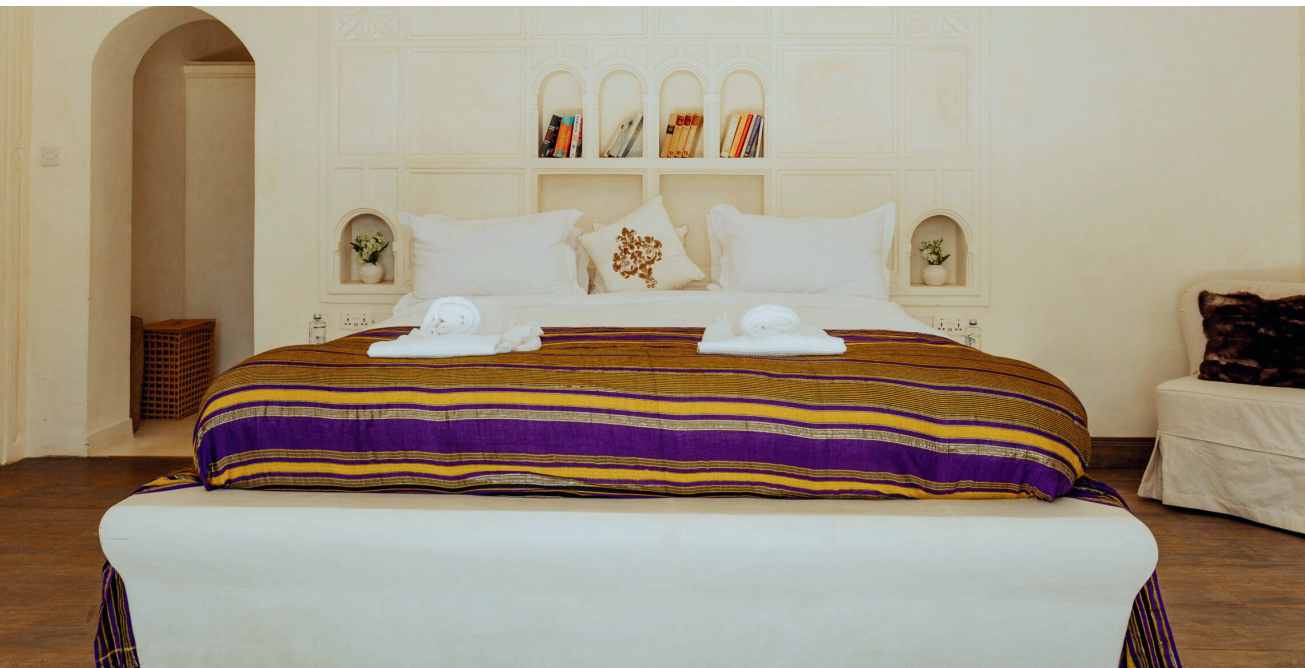
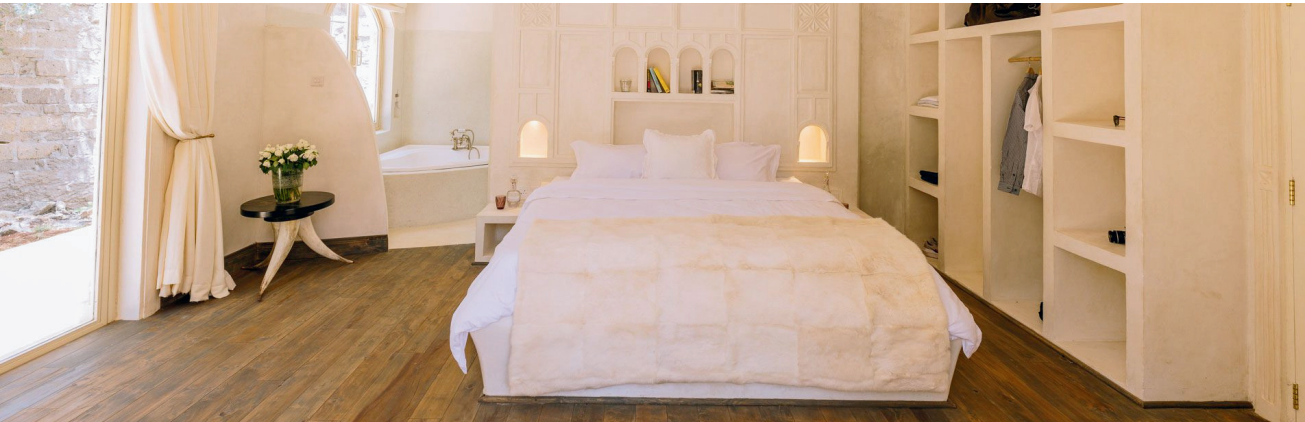
MEALS AT MANZILI HOUSE ARE FULL OF HEART—HOME-COOKED WITH FRESH, SEASONAL INGREDIENTS SOURCED FROM NAIROBI'S MARKETS AND NEARBY FARMS. FROM BREAKFAST IN THE COURTYARD, TO LUNCHESES BY THE POOL, TO SWAHILI STYLE CANDLELIT DINNERS UNDER THE STARS, FOOD HERE IS ABOUT TOGETHERNESS AND SIMPLICITY. EXPECT WHOLESOME DISHES, EAST AFRICAN TOUCHES, AND GENEROUS HELPINGS SERVED IN BEAUTIFUL, THOUGHTFUL SPACES.



SLEEP IN COMFORT – A RESTFUL RETREAT IN THE CITY

EACH OF THE SIX ENSUITE BEDROOMS OFFERS WARMTH AND EASE, WITH NATURAL TEXTURES, SOFT LINENS, AND CURATED DETAILS. LONG SLEEPS, AFTERNOON NAPS, AND QUIET MOMENTS ARE WOVEN INTO THE RHYTHM OF THE HOUSE. WHETHER IT'S THE HUM OF THE GARDEN OUTSIDE OR THE STILLNESS OF THE NIGHT, REST HERE IS INTIMATE AND GROUNDING.

• MANZILI MAIN HOUSE – 4 BEDROOMS | MANZILI NDOTO – 2 BEDROOMS





MANZILI MAIN HOUSE - ZURI ROOM

“BEAUTIFUL”

ZURI MEANS “BEAUTIFUL,” AND THIS ROOM LIVES UP TO ITS NAME IN EVERY DETAIL. ELEGANT FURNISHINGS, WARM TONES, AND THOUGHTFUL TOUCHES CREATE A SPACE OF QUIET REFINEMENT. IT IS A PLACE WHERE BEAUTY IS NOT JUST SEEN BUT FELT—IN THE STILLNESS, IN THE COMFORT, AND IN THE WAY THE ROOM HOLDS YOU.



MANZILI MAIN HOUSE - BAHATI ROOM

“LUCK / BLESSING”

NAMED FOR BAHATI, MEANING LUCK OR BLESSING, THIS ROOM CARRIES A SENSE OF GRACE AND GOOD FORTUNE. WITH ITS INVITING ATMOSPHERE AND PEACEFUL DESIGN, IT FEELS LIKE A GENTLE REMINDER THAT THE SIMPLEST MOMENTS—A DEEP SLEEP, MORNING LIGHT, OR SHARED LAUGHTER—ARE LIFE’S GREATEST BLESSINGS.



MANZILI MAIN HOUSE - JADINI ROOM

“BEAUTIFUL GARDEN”

JADINI EVOKES THE SENSE OF A HIDDEN GARDEN—LUSH, ALIVE, AND QUIETLY NURTURING. THIS ROOM CARRIES THAT SPIRIT, WITH SOFT LIGHT AND NATURAL TEXTURES THAT BLOOM INTO CALM. IT IS A PLACE WHERE BEAUTY GROWS GENTLY AROUND YOU, A SANCTUARY TO REST, TO BREATHE, AND TO FEEL ROOTED IN SERENITY



MANZILI MAIN HOUSE - JELANI ROOM

“MIGHTY / POWERFUL”

JELANI MEANS STRENGTH AND POWER, AND THIS ROOM REFLECTS THAT SPIRIT WITH BOLD ACCENTS AND GROUNDING TEXTURES. IT IS A SPACE THAT FEELS BOTH PROTECTIVE AND INSPIRING, OFFERING COMFORT INFUSED WITH CHARACTER. HERE, REST COMES WITH A QUIET SENSE OF RESILIENCE AND RENEWAL.

MANZILI NDOTO - AMANI ROOM

“PEACE”

AMANI MEANS PEACE, AND THIS ROOM EMBODIES SERENITY IN ITS PUREST FORM. SOFT TONES, NATURAL TEXTURES, AND GENTLE LIGHT CREATE A SANCTUARY FOR REST AND REFLECTION. IT IS A SPACE TO RETREAT FROM THE WORLD, TO BREATHE DEEPLY, AND TO FIND CALM IN THE HEART OF THE HOUSE.



MANZILI NDOTO - NDOTO ROOM

“DREAM”

NDOTO MEANS DREAM, AND THIS ROOM FEELS LIKE STEPPING INTO ONE. WITH AIRY ELEGANCE AND QUIET CHARM, IT INVITES LONG, UNHURRIED NIGHTS AND SLOW MORNINGS. HERE, IMAGINATION DRIFTS FREELY, AND EVERY DETAIL WHISPERS OF POSSIBILITY—A PLACE WHERE DREAMS TAKE ROOT.





EXPERIENCES – AT YOUR PACE



WILDLIFE ENCOUNTERS JUST MINUTES AWAY AT NAIROBI NATIONAL PARK
CULTURAL HIGHLIGHTS OF KAREN, FROM THE KAREN BLIXEN MUSEUM TO ARTISAN STUDIOS AND LOCAL GALLERIES
PRIVATE YOGA AND MASSAGE AT THE HOUSE, WITH POOLSIDE OR ROOFTOP SETTINGS FOR DEEP RELAXATION
ROOFTOP SUNDOWNERS UNDER NAIROBI SKIES
CURATED FOOD AND WINE EXPERIENCES, FROM FINE DINING TO WEEKEND MARKETS
SHOPPING AND STYLE TOURS, FROM VIBRANT MAASAI MARKETS TO ELEGANT BOUTIQUES
EVENINGS ALIVE WITH MUSIC, ART, AND NAIROBI'S CREATIVE NIGHTLIFE
CREATIVE RESIDENCIES AND COLLABORATIONS WITH LOCAL ARTISTS ON REQUEST

SUNDOWNERS AMONGST THE ACACIAS



ROOFTOP WELLNESS



VISIT LOCAL MAKERS MARKETS



INSPIRING CREATIVITY

MANZILI HOUSE IS MORE THAN A PLACE TO STAY—IT IS A SPACE FOR TRAVELLERS, ARTISTS, AND DREAMERS. ITS DESIGN AND ATMOSPHERE INVITE REFLECTION AND CREATION, MAKING IT A SANCTUARY FOR THOSE SEEKING INSPIRATION IN THE CITY.





SUSTAINABILITY; CONSERVATION IN EVERY DETAIL

BUILT WITH LOCALLY SOURCED MATERIALS AND CRAFTSMANSHIP
OPERATED WITH A KENYAN TEAM
SUPPORTS LOCAL ARTISANS AND CULTURAL PROJECTS
DESIGNED WITH A LOW-IMPACT FOOTPRINT IN THE CITY

MANZILI HOUSE

Location Karen, Nairobi – 25 mins from Jomo Kenyatta International Airport / 15 mins from Wilson Airport

Altitude & Climate ~1795m / 5,889 ft above sea level, warm days, cool nights

Rooms Manzili House:
4 ensuite bedrooms, sleeps maximum 8 pax. One room can be converted to a twin
Manzili Ndoti:
2 ensuite bedrooms, sleeps maximum 4 pax

Maximum Guests 12 pax (8 main, 4 cottage)

Room Amenities Mosquito nets, pure cotton linen, dressing gowns, room safe, square pin plug socket, torch, drinking water, writing desk.

Bathroom Amenities Shower gel, shampoo, conditioner, soap, towels, make-up mirror.

Special Features Courtyard pool, rooftop terrace, exclusivity

Child Policy Children of all ages are welcome, cots available on request.

Child Minding Facilities Can be arranged with advance notice

Hairdryers Provided on request

Check in / Check out Check In time: 11:00AM
Check Out time: 10:00AM
Late departures need to be pre-arranged
No late departures in premium season

Seasons Manzili House is open year round

Climate There is a warm climate throughout the year

Special Dietary Requirements Catered for with advance notice

Power 24 hour power, backup generators. Charging points in rooms and in the main areas.

Accessibility Flat enough for wheelchair access but no disabled facilities

Mobile Reception Yes, all local networks

Exercise Equipment Yoga mats upon request

Tipping Yes, cash, mobile money and credit cards

Wi-Fi Yes, Starlink

Gift Shop Yes

Direct Transfer time from Airstrip Nairobi Wilson 15 mins, JKIA 25 mins

Dining Meals at Manzili House are private and home cooked, with tailored menus. Outdoor/rooftop dining when weather permits.

Bar All beverages included, (premium cocktail bar and premium wines upon request)

Laundry Complimentary laundry service provided

Malaria We are in a LOW RISK malaria area

Nearest Airstrip Nairobi Wilson Airport



CONTACTS

+(254) 718 139 359 | IG @MANZILIHOUSE

WWW.MANZILICOLLECTION.COM

RESERVATIONS@MANZILICOLLECTION.COM



PRIVATE | EXCLUSIVE | LUXURY | AT YOUR OWN PACE



YOUR PRIVATE SAFARI HOME

PERCHED ON THE SIRIA ESCARPMENT OVERLOOKING THE MAASAI MARA AND SERENGETI



PERCHED ON THE SIRIA ESCARPMENT, MANZILI MARA IS A PRIVATE SAFARI HOME WITH PANORAMIC VIEWS STRETCHING INTO TANZANIA AND JUST MINUTES FROM THE MARA TRIANGLE. BUILT ENTIRELY BY KENYAN CRAFTSMEN IN TRADITIONAL MAASAI STYLE USING NATURAL MATERIALS, IT REFLECTS THE SAME ARTISANAL SPIRIT AS MANZILI HOUSE IN NAIROBI AND IS INSPIRED BY THE LEGACY OF ANTHONY RUSSELL. OFFERED EXCLUSIVELY TO ONE GROUP AT A TIME, IT PROMISES SECLUSION, PRIVACY, AND THE RARE LUXURY OF TIME, TO MOVE SLOWLY AND EXPERIENCE A SOULFUL SAFARI AT YOUR OWN RHYTHM. ADJACENT TO THE PARTAKILAT RHINO CONSERVANCY, GUESTS ENJOY ACCESS TO COMMUNITY-LED CONSERVATION AND RHINO WALKS, WHILE A FRONT-ROW SEAT TO THE WILDEBEEST MIGRATION AND A LANDSCAPE STEEPED IN ART, STORY, AND STILLNESS MAKE THIS A SANCTUARY FOR DREAMERS, TRAVELLERS, AND EXPLORERS ALIKE

EXCLUSIVE USE, INTIMATE, LUXURIOUS AT YOUR OWN PACE



AN EAGLE'S VIEW ACROSS THE GREATER MAASAI MARA
AND THE NORTHERN SERENGETI BELOW.

COMFORT AND LUXURY - DESIGNED TO FEEL LIKE HOME



FROM SHADED VERANDAS AND TREETOP BEDROOMS, GUESTS ARE SURROUNDED BY WILDLIFE AND THE GENTLE HUSH OF THE LANDSCAPE BEYOND. MANZILI MARA WAS DESIGNED WITH PANORAMIC DECKS RAISED ON STILTS, ALLOWING THE HOME TO SIT IN AND AROUND THE TREES, BLURRING THE BOUNDARIES BETWEEN STRUCTURE AND WILDERNESS, AND BRINGING NATURE TO YOUR DOORSTEP IN EVERY DIRECTION. WITH SWEEPING VIEWS ACROSS THE SERENGETI AND SKIES THAT STRETCH INTO TANZANIA, THE HOUSE OFFERS DEEP COMFORT IN THE HEART OF UNTAMED LAND. INSIDE, INTERIORS ROOTED IN TRADITION ARE LAYERED WITH BOLD TEXTURES AND ADORNED WITH ART AND ARTIFACTS, EACH PIECE TELLING A STORY. THIS IS NOT YOUR TYPICAL SAFARI AESTHETIC; IT'S SOULFUL, STYLISH, AND A LITTLE BIT FUNKY, A SPACE FOR CREATIVES, DREAMERS, AND TRAVELLERS.

THE ART OF UNWINDING: SHARING MOMENTS TOGETHER



SLEEP IN COMFORT - A RESTFUL RETREAT IN THE WILD

EACH OF THE SEVEN ENSUITE BEDROOMS IS SET ON RAISED WOODEN DECKS, NESTLED INTO THE TREELINE, WITH SWEEPING VIEWS OVER THE PLAINS BELOW. NATURAL TEXTURES, SOFT LINENS, AND CURATED DETAILS CREATE A SENSE OF WARMTH AND EASE, INVITING LONG SLEEPS, AFTERNOON NAPS, AND QUIET MOMENTS CURLED UP WITH A BOOK BY THE FIRE, HOT WATER BOTTLE TUCKED BENEATH THE COVERS. AS THE SUN DIPS BEHIND THE ESCARPMENT, INDOOR FIREPLACES COME ALIVE, CASTING A GOLDEN GLOW ACROSS TIMBER FLOORS AND WOVEN WALLS. WHETHER YOU'RE DRIFTING OFF TO THE DISTANT SOUNDS OF THE SAVANNAH OR WAKING TO BIRDSONG AND MORNING MIST, THIS IS COMFORT REDEFINED, INTIMATE, ELEMENTAL, AND DEEPLY GROUNDING.





OSOTUA SUITE – “PEACE / BOND / CONNECTION”

WHERE PEACE FINDS ITS PLACE BETWEEN HEARTS. ‘OSOTUA’ IS MORE THAN A NAME—IT IS A PROMISE. OF HARMONY. OF SACRED CONNECTION. MAY YOU SLEEP IN THE GLOW OF TOGETHERNESS, WHERE LOVE FEELS AS VAST AND TIMELESS AS THE PLAINS BELOW.

SIRIKWA SUITE – “THE HIDDEN ONE / ANCIENT SHELTER”

WHERE SILENCE SPEAKS AND SHADOWS HOLD STORIES. THIS SACRED SPACE, NAMED IN HONOR OF THE FORGOTTEN SHELTERS OF THOSE WHO CAME BEFORE, INVITES YOU TO RETREAT, REST, AND RECONNECT WITH THE SOUL OF THE LAND. LET THE STILLNESS WRAP AROUND YOU LIKE A FORGOTTEN TALE REDISCOVERED.





ENKAJI BEDROOM “SIMPLE, GROUNDING AND WARM”

“HOME / HUT” WHERE COMFORT IS QUIET AND THE HEART FINDS REST. ‘ENKAJI’ MEANS HOME AND THIS LITTLE HAVEN INVITES YOU TO KICK OFF YOUR SHOES, EXHALE, AND BELONG.



OLONANA BEDROOM – “GENTLE ONE / PEACEFUL ONE”

A BEAUTIFUL CHOICE FOR A FAMILY SUITE OR CHILDREN’S ROOM. “OLONANA” MEANS “GENTLE” OR “PEACEFUL,” NOT LITERALLY “YOUNG ONE,” BUT OFTEN USED TO NAME BELOVED INDIVIDUALS.



OLONANA AND OLOIP BEDROOMS ARE SET SLIGHTLY AWAY FROM THE MAIN HOUSE AND CLOSELY CONNECTED TO EACH OTHER WITH A PRIVATE LOUNGE AREA.

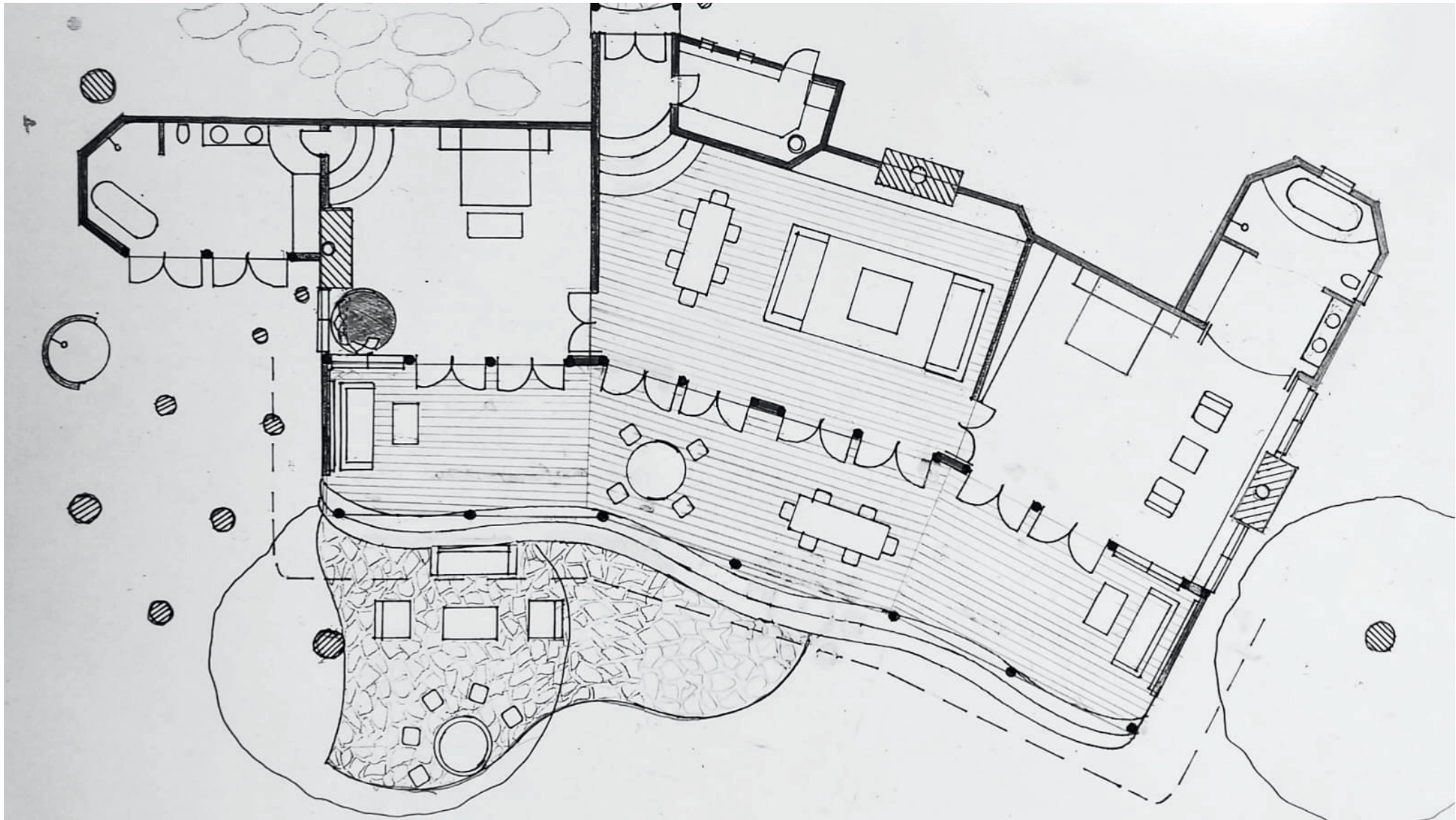
OLOIP BEDROOM – “SHADE / SHELTER”

HELD BENEATH A THOUSAND STARS. GAZE SKYWARD AND FEEL THE SHIMMER OF OLOIP, A SPACE OF PAUSE AND PROTECTION. THIS IS YOUR CELESTIAL PERCH: A PLACE TO DREAM WILDLY, SHINE BRIGHTLY, AND DRIFT INTO SLEEP WRAPPED IN THE SOFT HUSH OF THE COSMOS.



ENTUROTO FAMILY COTTAGE – “THE GATHERING”

PERCHED ABOVE THE ENDLESS PLAINS OF THE MARA, THE ENTUROTO FAMILY COTTAGE AT MANZILI MARA IS DESIGNED AS A PRIVATE SANCTUARY WHERE SPACE, STILLNESS, AND UNDERSTATED LUXURY COME TOGETHER EFFORTLESSLY. THOUGHTFULLY LAID OUT FOR FAMILIES OR SMALL GROUPS, THE COTTAGE IS COMPRISED OF TWO SUITES JOINED BY A COMMON LIVING AND DINING ROOM - CREATING A SENSE OF HOME IN THE HEART OF THE WILD.



SUNDOWNERS WITH A VIEW





WINING AND DINING, A TASTE OF HOME COOKED WITH SOUL

MEALS AT MANZILI MARA ARE FULL OF HEART, HOME-COOKED WITH CARE, USING LOCALLY SOURCED INGREDIENTS AND SEASONAL PRODUCE. WHETHER IT'S SUNRISE COFFEE WITH FRESH FRUIT ON THE DECK, A BUSH BREAKFAST UNDER ACACIA TREES, OR A CANDLELIT DINNER AROUND THE FIRE, FOOD HERE IS ABOUT TOGETHERNESS AND SIMPLICITY. EXPECT WHOLESOME DISHES, EAST AFRICAN TOUCHES, AND GENEROUS HELPINGS SERVED IN BEAUTIFUL, THOUGHTFUL SPACES, INDOORS AND OUT. FROM SLOW LUNCHES TO WILD PICNICS, EVERY MEAL INVITES YOU TO SLOW DOWN, SAVOUR, AND FEEL UTTERLY AT HOME.



SAFARI AT YOUR PACE



GAME DRIVES IN THE MARA TRIANGLE
GUIDED ANIMAL TRACKING AND BUSH WALKS
BUSH BREAKFASTS AND SUNDOWNERS WITH VIEWS OVER THE SERENGETI
RHINO WALKS – PARTAKILAT RHINO CONSERVANCY
YOGA MATS IN EVERY ROOM FOR YOUR CONVENIENCE
BEADING WITH THE MAASAI WOMEN
VISITS TO THE LOCAL MAASAI VILLAGE

BEADWORK WITH THE LOCAL MAASAI COMMUNITY



BUSH BREAKFASTS



INSPIRING CREATIVITY





SUSTAINABILITY

CONSERVATION IN EVERY DETAIL

MANZILI MARA IS GUIDED BY A LOW-IMPACT TOURISM MODEL, DESIGNED TO SUPPORT BOTH LOCAL COMMUNITIES AND THE NATURAL ECOSYSTEM.

KEY SUSTAINABILITY PRACTICES INCLUDE:

100% SOLAR-POWERED WITH NO DIESEL RELIANCE

BUILT ENTIRELY WITH LOCALLY SOURCED, NATURAL MATERIALS

OPERATED AND MAINTAINED BY A LOCAL MAASAI TEAM

SUPPORTS COMMUNITY PARTNERSHIPS AND CONSERVATION EFFORTS

MINIMAL FOOTPRINT AND LIMITED GUEST CAPACITY FOR ECOLOGICAL INTEGRITY

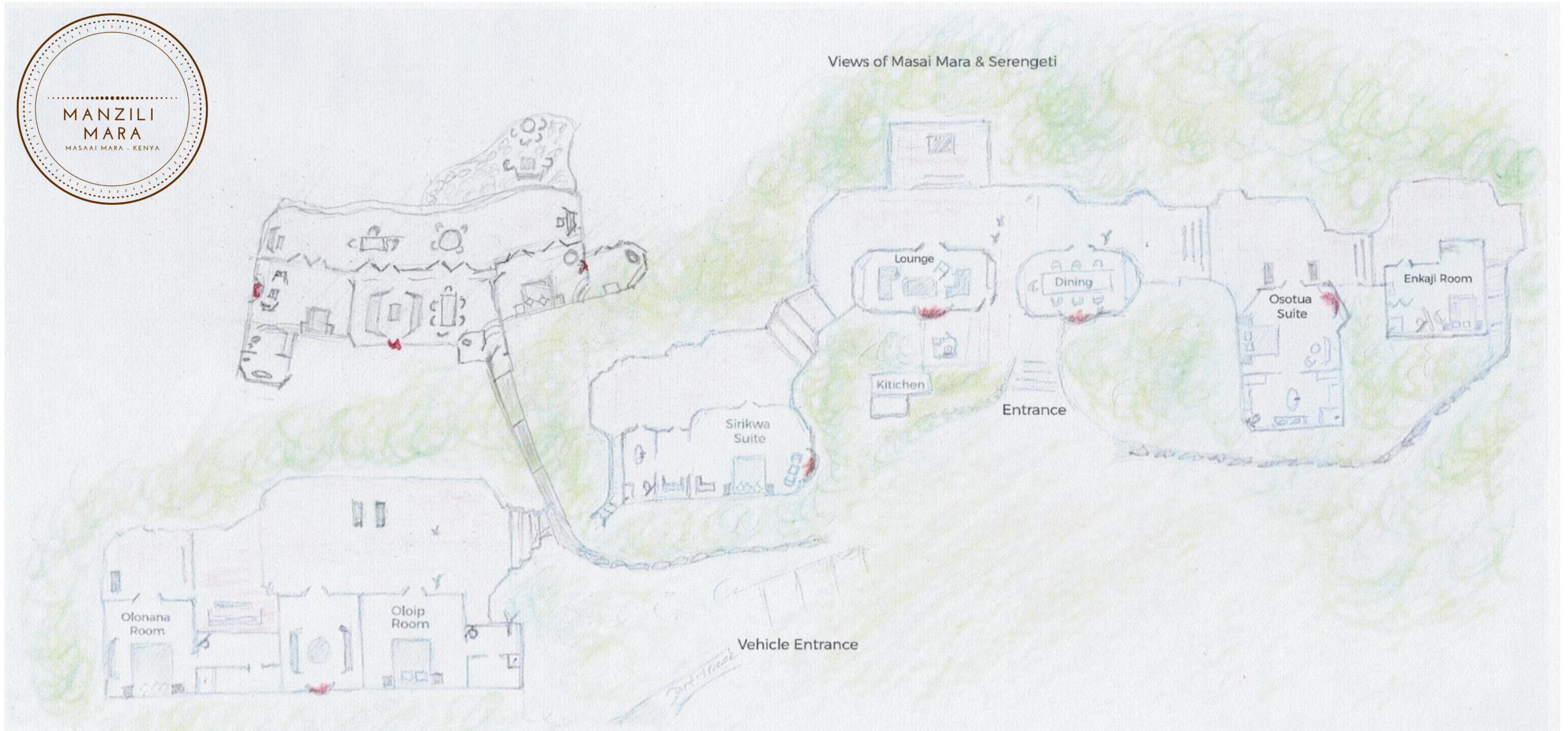
HERE, SUSTAINABILITY IS NOT AN ADD-ON—IT IS THE FOUNDATION.



THE HOUSE IS BUILT IN TRADITIONAL MAASAI STYLE—WITH MUD WALLS, STILTS, AND NATURAL MATERIALS—AND NESTLED INTO THE FOREST CANOPY. HANDCRAFTED WITH THE LOCAL COMMUNITY, THIS HOUSE RISES FROM THE LAND ITSELF—BUILT WITH NATURAL, SUSTAINABLE MATERIALS.

THIS IS A HOME DESIGNED FOR IMMERSIVE WILDERNESS

PROPERTY LAYOUT



MANZILI MARA

Location	Siria Escarpment, 20 minutes from the Mara Triangle, Kenya
Altitude & Climate	1,700 metres / 5,750ft above sea level.
Rooms	Exclusive Use 7 Beautiful luxury suites with adjoining bathrooms (bathtubs and showers) including a two bedroom family suite. 3 standard ensuite rooms with adjoining bathrooms (showers)
Maximum Guests	14
Room Amenities	Mosquito nets, pure cotton linen, dressing gowns, room safe, square pin plug socket, torch, drinking water
Bathroom Amenities	Shower gel, shampoo, conditioner, soap, towels, make-up mirror.
Layout	Each of the elegantly appointed rooms has cozy lounging spots with fireplaces and treed terraces with sweeping views. Despite its elevated position, Manzili Mara is naturally protected from the wind and elements, ensuring year-round comfort and serenity.
Special Features	Expansive grounds, escarpment views, exclusivity
Child Policy	Children of all ages are welcome, cots available on request.

Child Minding Facilities	Can be arranged with advance notice
Hairdryers	Provided on request
Check in / Check out	Check In time: 11:00AM Check Out time: 10:00AM Late departures need to be pre-arranged No late departures in premium season
Guide Accommodation	Available on request
Seasons	Manzili Mara is open year round
Climate	There is a warm climate throughout the year
Special Dietary Requirements	Catered for with advance notice
Power	Solar power (220V), 24Hrs supply. Charging points in rooms (3 pin square) and in the main areas.
Mobile Reception	Yes, Safaricom and Starlink
Exercise Equipment	Yoga mats in all rooms

Tipping	Yes, cash, mobile money & credit cards (AMEX not accepted)
Wi-Fi	Yes
Gift Shop	Yes
Dining	Meals at Manzili Mara are private.. Outdoor dining when weather permits.
Bar	All beverages included, including house wines and local spirits. Premium wines available on request
Laundry	Complimentary laundry service provided
Safari Car Types	Toyota Landcruisers, Landrovers Open
Malaria	We are in a LOW RISK malaria area
Nearest Airstrip	Kichwa Tembo Airstrip 1°17'58.8"S 35°3'31.49"E
Getting there	Schedule flights to Kichwa Tembo, Airstrip just 20 mins from the house) private charters/helicopters available on request Camp coordinates: 1°18'49.7"S 34°56'07.8"E



CONTACTS

+(254) 718 139 359 | IG @MANZILIMARA

WWW.MANZILICOLLECTION.COM

RESERVATIONS@MANZILICOLLECTION.COM